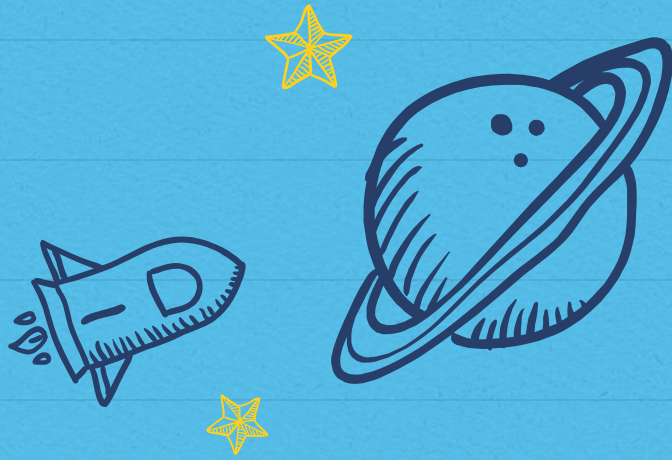


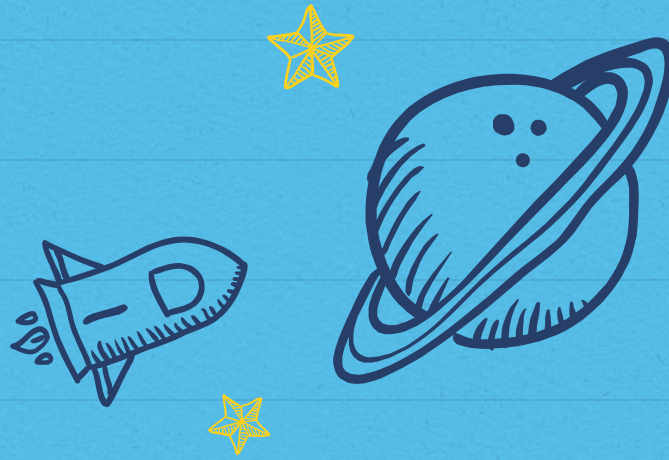


HELLO!

Madeline Stender
Transition Coordinator
Deerfield High School
mstender@dist113.org



POSTSECONDARY OPTIONS



HIGH SCHOOL VS COLLEGE

DIFFERENCES IN THE LAW

HIGH SCHOOL - IDEA

(INDIVIDUALS WITH DISABILITIES EDUCATION ACT)

- Goal: Success
- School is Responsible
- LRE, FAPE, Equality
- Individualized Planning
- Related Services
- Transition Planning

COLLEGE - ADA

(AMERICANS WITH DISABILITIES ACT)

- Goal: Equal Access
- Individual Responsibility
- Focus on Accommodations
- Focus on non-discrimination and undue hardship
- Same law that allows for equal access in the community and at work



LEGAL RIGHTS & RESPONSIBILITIES: WHOSE RESPONSIBILITY IS IT?

<u>Topic</u>	<u>High School</u> Section 504/IDEA	<u>Postsecondary</u> Section 504/ADA
Identification	School	Student
Assessment	School	Student
Programming	School/Parent	Student/College
Advocacy	School/Parent	Student
Decision Making	School/Parent	Student
Transition Planning	School/Parent/Student	Student

CHANGES IN SERVICES

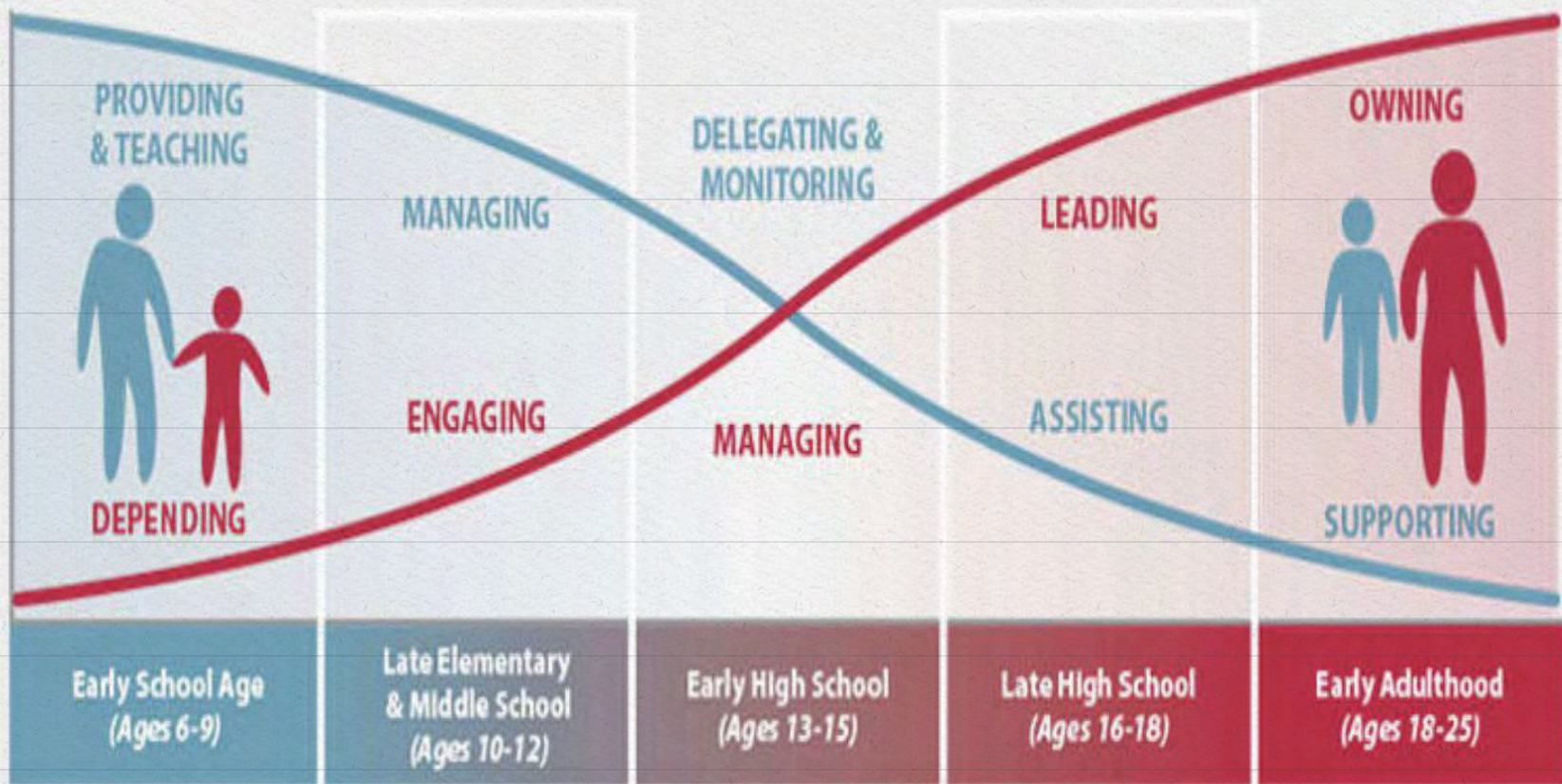
- ✗ Student transitions from an IEP to a 504 plan
- ✗ No more case management
- ✗ Students must self-identify
- ✗ Pay for services in some cases
- ✗ No modifications - only accommodations
 - ✗ i.e. waivers more unlikely



PARENT/
SUPPORT
PERSON

Responsibility for CF Care

PERSON
WITH CF



SKILLS NEEDED FOR COLLEGE



Self-Determination is KEY!

SELF-DETERMINATION

“Acting as the primary causal agent in one’s life and making choices and decisions regarding one’s quality of life...”

(Wehmeyer, 2001)



SELF-DETERMINATION: A CRITICAL SKILL FOR POSTSECONDARY SUCCESS

Self-Awareness

Self-Advocacy

Self-Efficacy

Self-Reflection

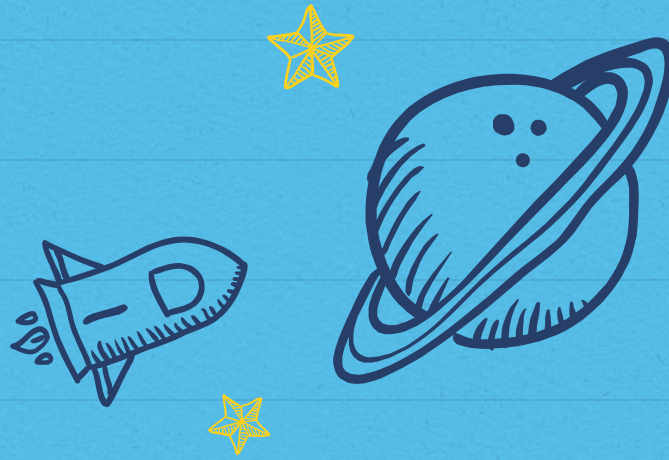
Self-Monitoring

Decision Making

Problem Solving

Goal Setting





TYPES OF COLLEGE SERVICES

2 YEAR COLLEGE OPTIONS

- ✘ Technical Schools - Vocational/Certificates
- ✘ Community College (College of Lake County)
 - ✘ Certificate Programs
 - ✘ Associate Degrees
- ✘ 2 Year Colleges with Residential Options
 - ✘ Vincennes University (STEP)
 - ✘ Lincoln College (ACCESS)
 - ✘ Kirkwood Community College
 - ✘ Parkland College



LEVELS OF SUPPORT

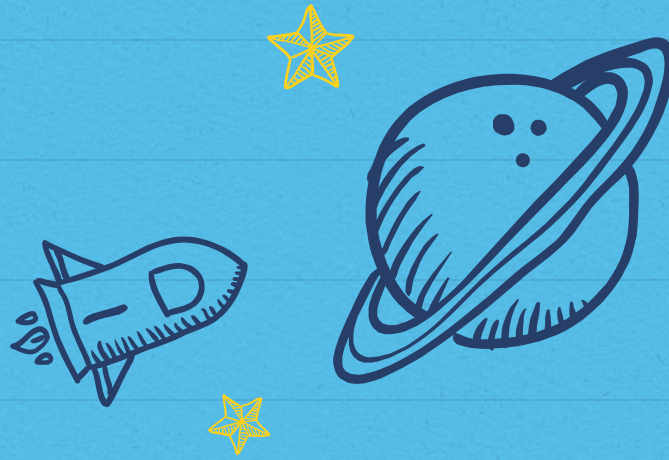
- ✘ Standard Supports - Resources for ALL students
- ✘ Accommodations Only
- ✘ Comprehensive Supports and Programs
 - ✘ Separate application/possible fee
 - ✘ Regular scheduled meetings
 - ✘ Certified providers
- ✘ Specific Colleges for Students with Disabilities



SCHOOLS WITH FULL SERVICE PROGRAMS

- ✗ University of Arizona (SALT)
- ✗ University of Denver (LEP)
- ✗ University of Indianapolis (BUILD)
- ✗ Loras College (Enhanced)
- ✗ Lynn University (Institute for Achievement and Learning)
- ✗ Muskingum College (PLUS)
- ✗ Southern Illinois University (ACHIEVE)
- ✗ University of Wisconsin - Oshkosh (Project Success)
- ✗ University of Wisconsin - Whitewater





COLLEGE APPLICATION PROCESS

THE SEARCH



It's All About FIT!

FACTORS:

- Size
- Location
- Level of support
- Majors/programs offered
- Cost
- Residential or commuter
- SAT/ACT/GPA requirements
- Mental health/medical supports

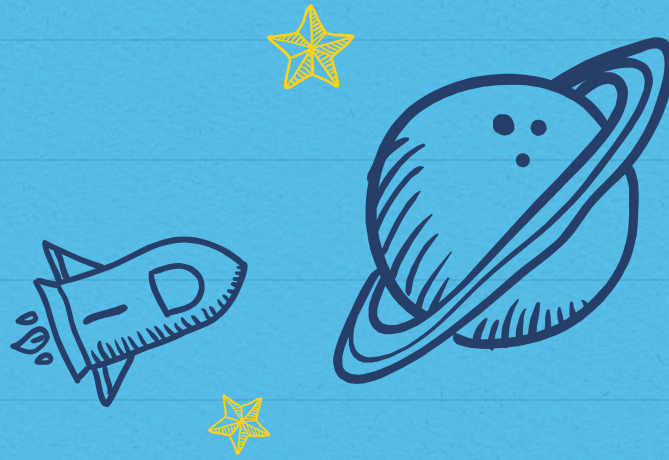


APPLY TO COLLEGE FIRST,
APPLY TO DISABILITY SERVICES SECOND

PERSONAL STATEMENT/DISCLOSURE

- ✗ Voluntary
- ✗ Disclose during application or after acceptance?
- ✗ Additional Information rather than topic of essay
- ✗ Provide context for admissions
- ✗ Explain nature of disability and its impact
- ✗ Highlights growth
- ✗ Addresses anticipated support needs





COLLEGE DISABILITY SERVICES

DOCUMENTATION

- ✗ Student Self Report
- ✗ Documentation
 - ✗ IEP or 504
 - ✗ Psychoeducational Testing/File Reviews
 - ✗ Doctors Notes
 - ✗ Summary of Performance
- ✗ Observation/Interaction
- ✗ Should include accommodations necessary to be successful to lessen the impact of the disability

TYPICAL ACCOMMODATIONS IN THE COLLEGE ENVIRONMENT

- ✗ Digital Textbooks
- ✗ Assistive Technology
- ✗ Extended Test Time/Alternative Testing
- ✗ Note Takers
- ✗ Quiet Test Room
- ✗ Reader for Exams
- ✗ Scribe
- ✗ Sign Language Interpreters
- ✗ Use of Calculator/Computer



"PICKING A COLLEGE IS LIKE PICKING A SPOUSE.
YOU DON'T PICK THE "TOP RANKED" ONE, BECAUSE
THAT HAS NO MEANING. YOU PICK THE ONE WITH
THE PERSONALITY AND CHARACTER THAT
COMPLEMENTS YOUR OWN"



THANKS!

Questions?

Please feel free to reach out with any questions or comments!

Madeline Stender
Transition Coordinator, Deerfield High School
mstender@dist113.org